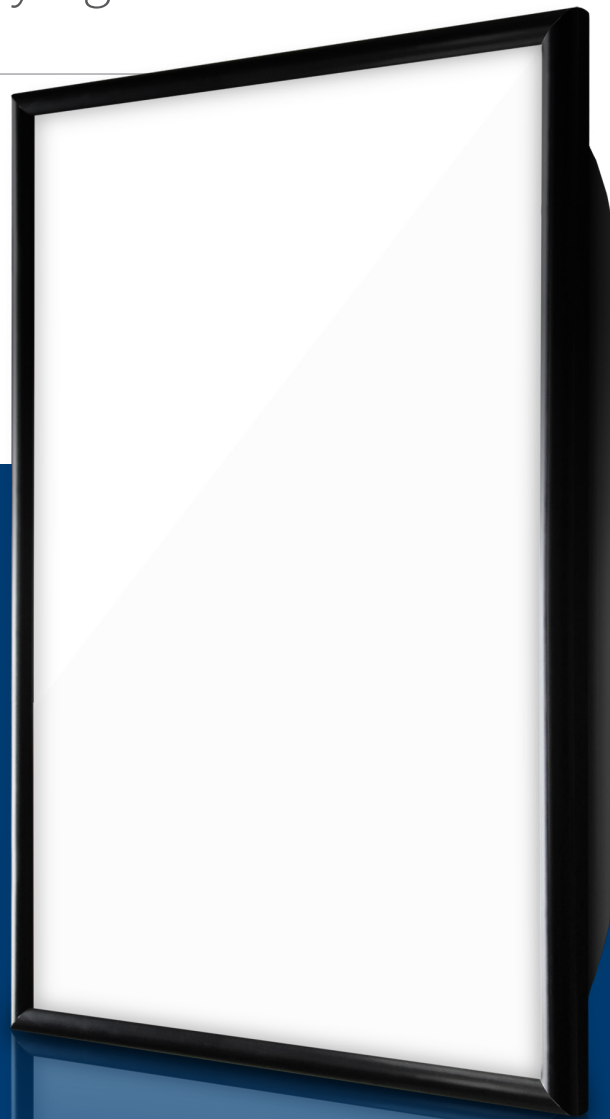


# FeatherLyte T8™

## Graphic Display Lightbox

Economy plastic lightbox with aluminum front frame and clear + diffused white lenses



### FEATURES

- Great for retail, foodservice, crafts
- Lightweight vacuum-formed styrene body with aluminum front frame
- Dual lenses included – white + clear slide-in lenses for easy graphics change
- Electronic ballasts for fast-starting, flicker and hum-free lamplight

### SPECIFICATIONS

- Lamps – cool white fluorescent
- Lenses – one clear + one diffused white
- Power cord – 7-ft. 3-wire, black, exit rear panel
- Electrical – 120VAC, 60Hz
- Warranty – 12 mos. ltd. warranty against mfr. defects
- Safety – UL listed components

### OPTIONS

- 14 standard sizes
- Rectangle or circle face
- LED lamp upgrade available
- Hanging chain kit
- In-line on/off switch



**BLUE RIVER DIGITAL**

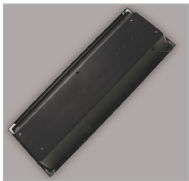
*display brilliance*



INSIDE



SIDE



BACK

# FeatherLyte T8

## PRODUCT SNAPSHOT

INDOOR/OUTDOOR	indoor
DISPLAY SIDES	single-sided
CHASSIS DEPTH	4"
LOADING METHOD	side-slide
CONSTRUCTION	plastic
UL LISTING	component only
CUSTOM-SIZEABLE	minimum qty. 250 units, for custom sizes
STD. LEAD TIME	4 working days*
PRODUCT POSITION	light-duty economy use

## DIMENSIONS

Graphic Size	Outside Dimensions	Viewable Area	Case Depth	Frame Width	Net Weight	Ship Weight
8 x 22"	8-3/16 x 22-1/4"	6-1/8 x 20-1/8"	4"	1-1/16"	6.5 lbs.	7 lbs.
10 x 28"	10-3/16 x 28-3/16"	8 x 26"	4"	1-3/32"	9 lbs.	11 lbs.
14 x 22"	13-3/4 x 22"	11-11/16 x 19-15/16"	3-3/4"	1-1/16"V 1-1/32"H	6.5 lbs.	7 lbs.
15 x 15"	14-11/16 x 14-11/16"	12-9/16 x 12-9/16"	4"	1-3/32"	6 lbs.	6 lbs.
15 x 30"	14-5/8 x 29-11/16"	12-9/16 x 27-5/8"	4"	1-3/32"V 1-1/16"H	9.5 lbs.	10 lbs.
16 x 20"	16-3/16 x 20-3/16"	14 x 18"	3-3/4"	1-3/32"V 1-1/8"H	8 lbs.	7.25 lbs.
20 x 24"	20-3/16 x 24-1/16"	18 x 22"	4"	1-1/16"V 1-3/32"H	9 lbs.	30 lbs.
20 x 36"	20-3/16 x 36"	18 x 33-3/4"	3-3/4"	1-1/16"V 1-1/8"H	13 lbs.	30 lbs.
24 x 30"	24-3/16 x 30-1/4"	22 x 28"	4"	1-1/16"V 1-3/16"H	15.5 lbs.	30 lbs.
30 x 40"	30-3/8 x 40-5/8"	28 -1/4 x 38-1/2"	4"	1-1/16"	27 lbs.	70 lbs.



This model is only custom-sizeable for quantities of 250 or more.

\* The information contained in this document is not intended nor guaranteed for contract nor design purposes. Some combinations of options may not be available. Stated lead time is a target only; actual lead time depends on options, order quantity and current production loads. Any specifications critical to your project must be verified via formal written quote from the manufacturer. The manufacturer assumes no liability for loss or damage related to the accuracy of data published herein.