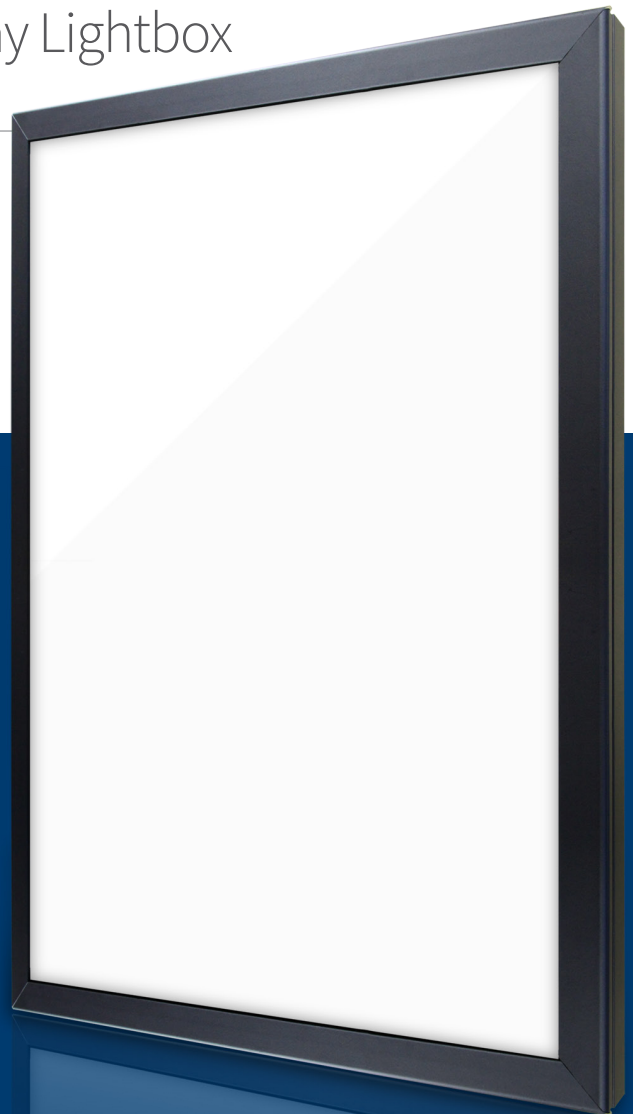


# ThinLyte Premium™

## Graphic Display Lightbox

Our brightest and lowest-profile direct-backlit fluorescent lightbox



### FEATURES

- Best-of-class direct-backlit brightness, at only 2" chassis depth
- Diffusion-engineered for uniform light intensity across display face
- Showcase-grade extruded aluminum construction with mitered corners
- Quick-change graphics, no tools required
- Customizable size, paint and options – no minimum quantity
- UL and CSA-listed electric sign

### SPECIFICATIONS

- Lenses – 0.12" diffused white + 0.03" clear polycarbonate
- Power – 120VAC, 60Hz
- Cord – 8 ft. 3 wire, black, exit side rail
- Lamps – T8 cool white fluorescent
- Warranty – 2 year ltd. warranty against mfr. defects

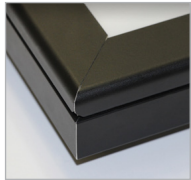
### OPTIONS

- Choice of anodized silver or powdercoat colors
- On/off toggle switch
- Eyebolts for overhead hanging
- Vertical or horizontal mount
- Alternate color temperature lamps

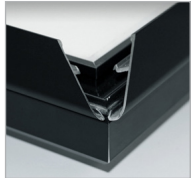


**BLUE RIVER DIGITAL**

*display brilliance*



CORNER



OPEN CORNER



INSIDE

# ThinLyte Premium

## PRODUCT SNAPSHOT

INDOOR/OUTDOOR

indoor

DISPLAY SIDES

single-sided

CHASSIS DEPTH

2"

LOADING METHOD

4-side tool free snap frame

CONSTRUCTION

premium extruded aluminum

UL LISTING

yes

CUSTOM-SIZEABLE

yes

STD. LEAD TIME

5 working days\*

PRODUCT POSITION

low-profile, super-bright backlit showcase for upscale retail and architectural use

## DIMENSIONS

Graphic Size	Outside Dimensions	Viewable Area	Case Depth	Frame Width	Net Weight	Ship Weight
20 x 24"	22 x 26"	19-1/4 x 23-1/4"	2"	1-3/8"	15 lbs.	17 lbs.
20 x 30"	22 x 32"	19-1/4 x 29-1/4"	2"	1-3/8"	25 lbs.	28 lbs.
22 x 28"	24 x 30"	21-1/4 x 27-1/4"	2"	1-3/8"	18 lbs.	21 lbs.
24 x 24"	26 x 26"	23-1/4 x 23-1/4"	2"	1-3/8"	20 lbs.	23 lbs.
24 x 30"	26 x 32"	23-1/4 x 29-1/4"	2"	1-3/8"	20 lbs.	23 lbs.
24 x 36"	26 x 38"	23-1/4 x 35-1/4"	2"	1-3/8"	23 lbs.	26 lbs.
30 x 40"	32 x 42"	29-1/4 x 39-1/4"	2"	1-3/8"	31 lbs.	35 lbs.
36 x 48"	38 x 50"	35-1/4 x 47-1/4"	2"	1-3/8"	48 lbs.	52 lbs.
40 x 60"	42 x 62"	39-1/4 x 59-1/4"	2"	1-3/8"	60 lbs.	65 lbs.

This model is also custom-sizeable. To receive a quote for custom sizes, [visit our Custom Lightbox Quote Request page.](#)

\* The information contained in this document is not intended nor guaranteed for contract nor design purposes. Some combinations of options may not be available. Stated lead time is a target only; actual lead time depends on options, order quantity and current production loads. Any specifications critical to your project must be verified via formal written quote from Blue River Digital. Blue River Digital Inc. assumes no liability for loss or damage related to the accuracy of data published herein.