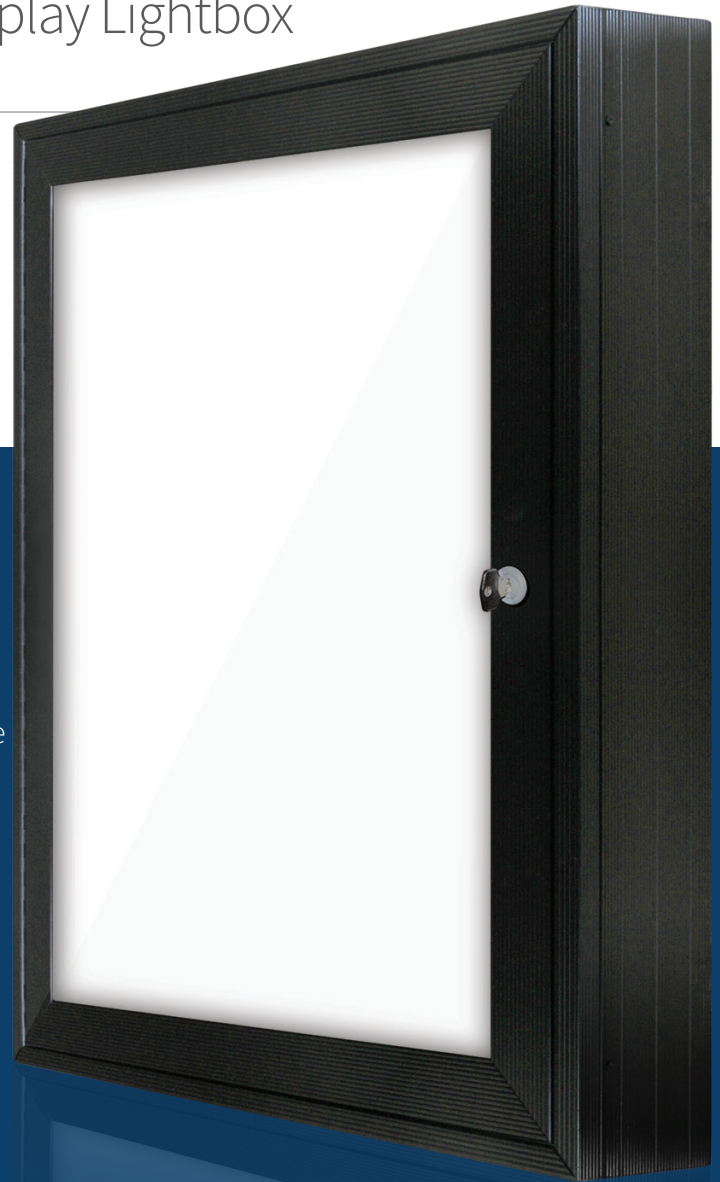


WeatherLyte Econo™

Graphic Display Lightbox

Outdoor-durable and code-compliant workhorse lighted sign at discount economy pricing



FEATURES

- Extruded aluminum construction for lightweight and durability
- Locking full-length hinged door w/interior snap frame for easy loading and tamper-resistance
- Zero side clearance required to open door, for tight installations
- Includes shatter-resist clear acrylic lens to protect your Duratrans graphic
- Choice of hard-wiring or insulated power cord w/grounded plug
- Internal on/off switch included, no extra charge
- Cool white T8 fluorescent technology
- Rear pan is sheet aluminum

SPECIFICATIONS

- Lenses — clear acrylic
- Power — 120v, 60hz
- Hard-wired for permanent installation
- Lamp – cool white T8 fluorescent, 1" dia.

OPTIONS

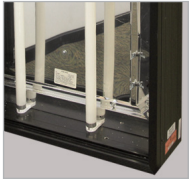
- Custom-sizeable
- Indoor or outdoor configuration
- Finish – black powdercoat finish or outdoor grade clear anodized

WeatherLyte Econo

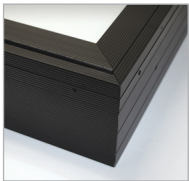
PRODUCT SNAPSHOT



LOCK



INSIDE



CORNER

INDOOR/OUTDOOR

indoor or outdoor

DISPLAY SIDES

single-sided

CHASSIS DEPTH

5-3/4"

LOADING METHOD

hinged locking door

CONSTRUCTION

extruded aluminum

UL LISTING

yes

CUSTOM-SIZEABLE

yes

STD. LEAD TIME

7 working days*

PRODUCT POSITION

economy-grade, outdoor-rated damp-resistance with hinged locking door

DIMENSIONS



Graphic Size	Graphic Size	Viewable Area	Frame Width		Case Depth	Net Weight	Ship Weight
			Horiz.	Vert.			
18 x 24"	22.25 x 28.125"	17.25 x 23.25"	2.5"	2.4375"	5.75"	15 lbs.	20 lbs.
18 x 40"	22.25 x 44.125"	17.25 x 39.25"	2.5"	2.4375"	5.75"	25 lbs.	30 lbs.
20 x 30"	24.25 x 34.125"	19.25 x 29.25"	2.5"	2.4375"	5.75"	18 lbs.	23 lbs.
24 x 24"	28.25 x 24.125"	23.25 x 23.25"	2.5"	2.4375"	5.75"	18 lbs.	23 lbs.
24 x 30"	28.25 x 34.125"	23.25 x 29.25"	2.5"	2.4375"	5.75"	25 lbs.	30 lbs.
24 x 36"	28.25 x 40.125"	23.25 x 35.25"	2.5"	2.4375"	5.75"	35 lbs.	40 lbs.
24 x 48"	28.25 x 52.125"	23.25 x 47.25"	2.5"	2.4375"	5.75"	45 lbs.	50 lbs.
27 x 40"	31.25 x 44.125"	26.25 x 39.25"	2.5"	2.4375"	5.75"	47 lbs.	55 lbs.
30 x 30"	34.25 x 34.125"	29.25 x 29.25"	2.5"	2.4375"	5.75"	27 lbs.	33 lbs.
30 x 40"	34.25 x 44.125"	29.25 x 39.25"	2.5"	2.4375"	5.75"	35 lbs.	40 lbs.
30 x 48"	34.25 x 52.125"	29.25 x 47.25"	2.5"	2.4375"	5.75"	40 lbs.	45 lbs.
32 x 40"	36.25 x 44.125"	31.25 x 39.25"	2.5"	2.4375"	5.75"	27 lbs.	43 lbs.
36 x 36"	40.25 x 40.125"	35.25 x 35.25"	2.5"	2.4375"	5.75"	30 lbs.	35 lbs.
36 x 48"	40.25 x 52.125"	35.25 x 47.25"	2.5"	2.4375"	5.75"	50 lbs.	60 lbs.
48 x 48"	52.25 x 52.125"	47.25 x 47.25"	2.5"	2.4375"	6.25"	75 lbs.	85 lbs.
48 x 60"	52.25 x 64.125"	47.25 x 59.25"	2.5"	2.4375"	6.25"	90 lbs.	100 lbs.

This model is also custom-sizeable. To receive a quote for custom sizes, [visit our Custom Lightbox Quote Request page.](#)

* The information contained in this document is not intended nor guaranteed for contract nor design purposes. Some combinations of options may not be available. Stated lead time is a target only; actual lead time depends on options, order quantity and current production loads. Any specifications critical to your project must be verified via formal written quote from Blue River Digital. Blue River Digital Inc. assumes no liability for loss or damage related to the accuracy of data published herein.